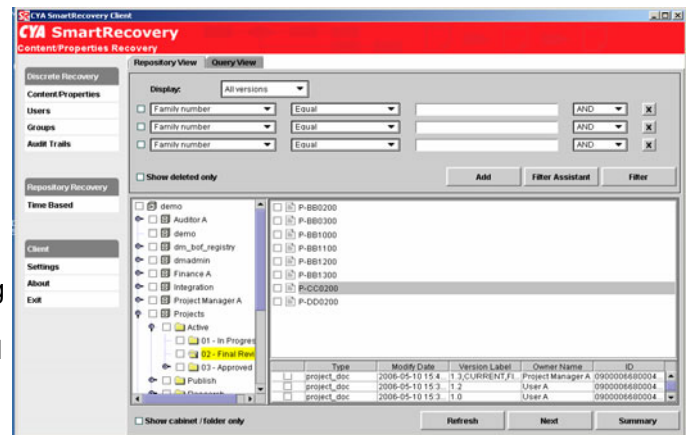


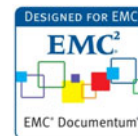
CYA SmartRecovery for EMC Documentum

Your organization has invested significant time and resources into your EMC Documentum ECM system to achieve financial and operational excellence, enhance business performance, increase employee productivity, and maintain continuous availability of data for business continuity, compliance and governance purposes. Ensure your investment is properly protected with **CYA SmartRecovery™**.

CYA SmartRecovery is an application-aware, near-CDP solution that protects your Documentum investment by providing rapid, granular recovery of content and complex metadata (i.e. lifecycles, permissions, audit trails, links, custom properties, and time/date stamps). Through its backup-to-disk capability, content and metadata that are lost due to user, logical, operational or programmatic errors, malfeasance, or metadata corruption are restored back to the Documentum repository by a single administrator to their original state—all while Documentum stays online. **CYA SmartRecovery** leverages the Documentum Content Server API and integrates with the same components as the Content Server. Recovering information is as simple as browsing the folders and documents from **CYA SmartRecovery's** intuitive interface and selecting what you wish to recover.



The intuitive CYA SmartRecovery interface leverages the layout of the Documentum repository so that objects in need of recovery can be quickly and easily located.



Highlights & Features

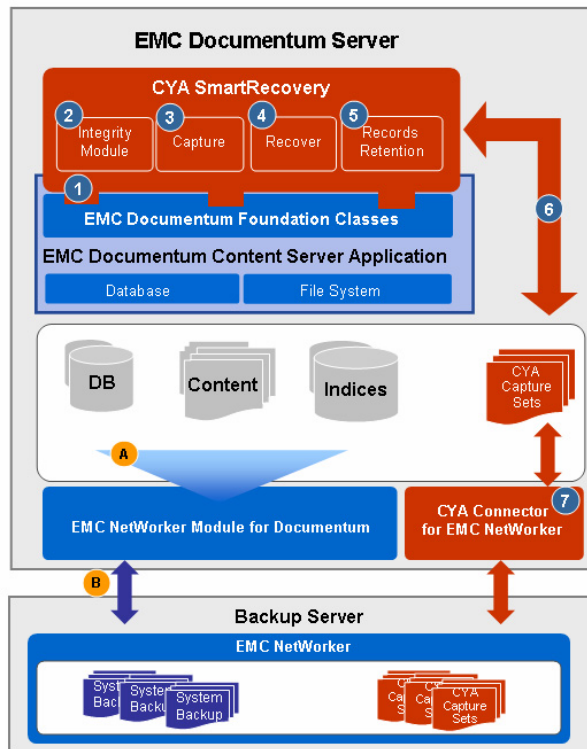
Benefits

“Hot” granular recovery of Documentum content and metadata	Ensures user productivity and minimizes needed recovery resources by enabling content and complex metadata to be recovered back to the repository in their original state by a single administrator while Documentum stays online.
Synchronous capture of content and metadata	Ensures data integrity and facilitates rapid response to audits, inspections, and litigation by capturing, validating and preserving content and metadata in a synchronous, single pass.
Automatic record purge	Aligns with EMC Documentum Retention Policy Services to destroy content and metadata upon its removal from Documentum. Also enables administrators to specify a retention period which when expired triggers permanent deletion of records from CYA capture sets.
Time-based recovery option	Enables ECM objects to be recovered back to any point in time, allowing objects that have been created or modified as little as 15 minutes ago to be recovered easily by one administrator. Allows the performance of hot Documentum backups, and in the event of a system failure, improves recovery point objectives (RPOs) to minutes.
Corruption detection	Data Integrity Module (DIM) enables proactive resolution of referential integrity issues by identifying broken relationships (corruptions) that typically exist in repositories at the application level (i.e. between a document and its associated lifecycles).
Lost information tracking	Ensures rapid, painless recovery by enabling administrators to see at a glance what has been lost/deleted from the repository.
One-step folder recovery	Facilitates fast recovery by allowing administrators to view the folder structure of the docbase within the CYA SmartRecovery interface, and select folder names to quickly recover all or specific files within the folders.
Multi-language support	Supports international character sets for easy global deployment.
Minimal system requirements	Utilizes the same memory and CPU resources as just one Documentum user, allowing CYA capture jobs to run as often as every 15 minutes.
Fast deployment	CYA SmartRecovery can be up and running within as little as three days.

The CYA SmartRecovery Capture Process

Intelli-Capture™, **CYA SmartRecovery**'s proprietary, near-CDP technology, understands the technical relationships between objects, and operates in a "hot" (live) mode. **CYA SmartRecovery** packages the content and metadata as CYA Capture Sets, which are compressed and stored on low cost storage devices such as network attached storage (NAS). Intelli-Capture™ reduces storage requirements by capturing data only once, unless it has been modified. Integration with Documentum APIs means no disruption to the repository, and ensures the integrity of capture sets required for a recovery operation.

CYA SmartRecovery for EMC Documentum Architecture



Recover from operational (partial) information loss

- 1 Documentum-aware capture and recovery while repository is online (Intelli-Capture™)
- 2 Over 350 integrity checks to proactively identify and report inconsistencies
- 3 Frequent, incremental capture of repository changes reduces data loss window to within 15 minutes
- 4 Recovers metadata and content within minutes with no system downtime
- 5 Records are expunged from capture sets when retention periods have expired
- 6 Content and associated metadata stored in CYA Capture Sets on disk for fast recovery
- 7 Provides seamless recovery when CYA capture sets are stored with EMC NetWorker

Recover from full system failures and disasters

- A Enables a full or incremental backup of Documentum components while application is online
- B Integrates with NMD and provides recovery of Documentum components from disk or tape

Full support for all EMC Documentum content server objects

CYA SmartRecovery enables granular recovery of all EMC Documentum Content Server objects while preserving original properties (metadata) such as object id's and date/ timestamps. The following are examples of objects that are recovered with **CYA SmartRecovery**:

CYA SmartRecovery:

Documents

- Renditions
- Retention schedules
- Permission sets
- Workflow instances and lifecycle states
- Custom attributes

Cabinets, Folders

- Permission sets

Users

- Login name, domain, home repository
- Default folder, group and permission set
- State

Audit Trails

- Original date and time stamps
- Event name
- Event source
- Audited object ID
- Workflow ID

Groups

- Name, alias set

Miscellaneous

- Workflow templates
- Custom types
- Notifications
- Subscriptions

EMC Documentum Environments Supported

Documentum content server

- 5.3 and newer

Repository configurations

- Standalone
- Distributed storage
- Federated

Relational database

- Microsoft SQL Server
- Oracle
- Sybase
- IBM DB2

Operating systems

- Microsoft Windows
- Sun Solaris
- IBM AIX
- Red Hat Linux
- HP-UX

Complements & adds value to

- EMC NetWorker
- IBM Tivoli Storage Manager
- Symantec Veritas NetBackup